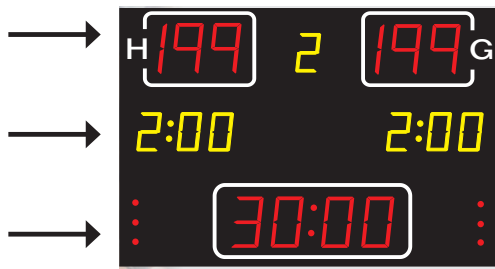
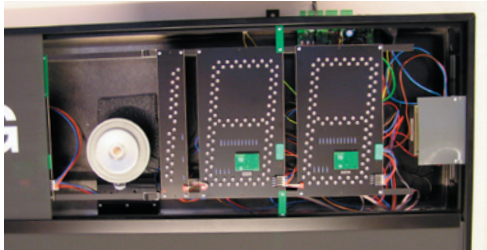




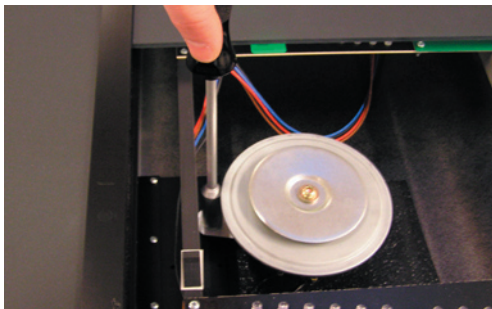
Horn mounted inside scoreboard.



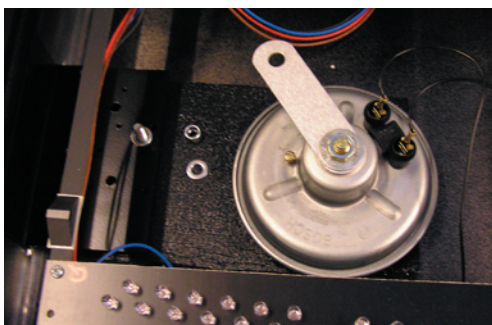
1. Unscrew the 3 screws in the left side of the scoreboard. Remove the frontplate list.



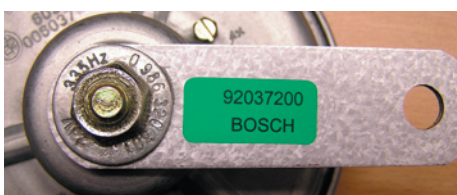
2. The horn is mostly mounted in the upper scoreboard section (Score). Slide the frontplate to the left to gain access to the horn



3. Loosen the nut securing the horn and remove nut and washer.



4. Disconnect the cable shoes and mount the new horn. Assemble the board in reverse order.

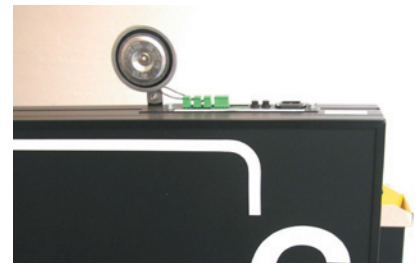


92037200 = 335Hz
Gametime on scoreboard



92037201 = 420Hz
Attack time on shot-clock

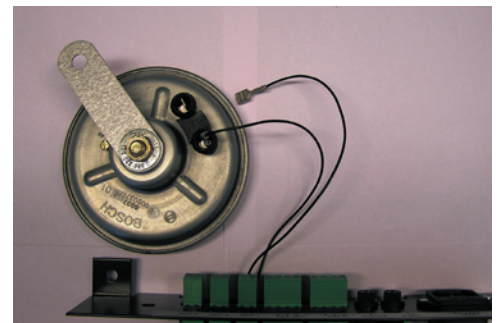
Horn mounted outside scoreboard.



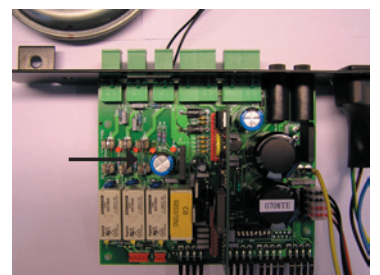
1. The horn is placed in the upper right corner



2 Loosen the nut securing the horn and remove the nut and wascher.



3. Disconnect the cable shoes and mount the new horn in reverse order.



If the defective horn has short circuited, the fuse F3 on the CB is burned. Replace the fuse with a 3.15AT.